

# VP160-A244-M

## Explosion-proof IR PTZ Camera

**Infinova**<sup>®</sup>  
The Integrator's Manufacturer



- 2-Megapixel 1/2.8" Progressive Scan CMOS, maximum resolution up to 1920 × 1080, clear and delicate images
- 44X optical zoom, fast and accurate focusing
- Support ultra-low illumination, 0.002 lux @ F1.2 (AGC ON) color, 0.0002 lux @ F1.2 (AGC ON), black and white
- Support wide dynamic, 3D digital noise reduction, strong light suppression and other functions
- Support H.265/H.264 efficient compression algorithm, greatly reducing the bit rate
- Full-featured: heartbeat, PTZ control, alarm, audio, user management
- Intelligent wiper function, the wiper adopts automobile wiper blade, which has good weather resistance and easy replacement.
- IR-Cut Removable (ICR) Filter for Day/Night switching
- High-efficiency infrared/white light array lamp, low thermal energy, low power consumption, infrared distance up to 200 meters
- 360° continuous rotation in the horizontal direction, -90° to +90° in the vertical direction, no monitoring blind zone
- Self-contained junction box with 100M optical interface for easy installation

### Product Description

VP160-A244-M series HD 2MP explosion-proof integrated IP PTZ camera is fully-developed and specially designed for use in flammable and explosive hazardous areas that has iia, iib, iic flammable gas, and the ignition temperature group is zone 1 and zone 2 of the t1-t6 group. The flammable gas or the explosive mixture formed by steam and air is also applicable to the ignition temperature group. It is a place containing a combustible dust mixture in Zones 20, 21, and 22 of the t1-t6 group. Such as: petroleum, chemical, mine, military, medicine, oil depot, ship, drilling platform, gas station, fireworks production, grain processing and storage.

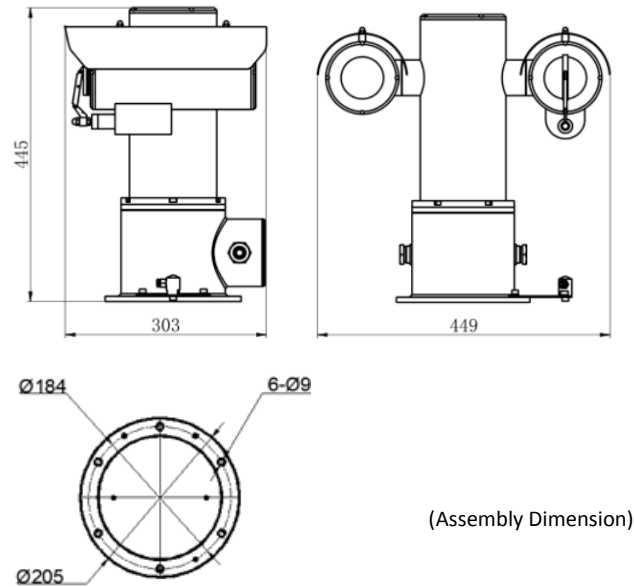
The system uses 304/316L stainless steel to ensure its good explosion-proof performance in hazardous areas. It has an absolute operating temperature range of -40°F~140°F (-40°C~60°C). This camera is properly sealed to prevent the intake of flammable dust and ensure strong corrosion-resistant capabilities.

The user-friendly GUI interface is designed for easy PTZ control and convenient camera parameter settings. In addition, area zoom and image PTZ are also offered. The intelligent motion detection and multiple alarm responses make it even safer to use.

## Technical Specifications

Model	VP160-A244-M
Vandal Resistance	IK10
Protection Level	IP68
<b>Camera</b>	
Image Sensor	1/2.8" Progressive Scan CMOS
Signal System	PAL/NTSC
Minimum Illumination	Color: 0.002 lux @ F1.2 (AGC ON); B/W: 0.0002 lux @ F1.2 (AGC ON)
Day/Night Functionality	ICR
Scanning System	Progressive Scan
Shutter	1/6~1/8000s
Day/Night Switch	ICR
WDR	120dB
OSD	Customized OSD with custom effects for multiple content styles
Motion Detection	Support
Privacy Mask	Support
Statistical Analysis	Traffic Statistics
Intelligent Functions	Cross-line detection, intrusion alarm, illegal parking, automatic tracking, face detection, license plate recognition
<b>Lens</b>	
Optical Zoom	44X
Aperture/Focal Length	F1.2 ~ F3.5, f=5 ~ 220mm
<b>Menu Control</b>	
Exposure Mode	Auto/Manual
Focus Mode	Auto/Manual
<b>Video/Audio</b>	
Video Compression Standard	H.265/H.264/MJPEG
Encoding Capability	1080p@60fps
Audio Compression Standard	G.711a, G.711u, AAC
<b>Network Features</b>	
Supporting Protocol	L2TP, IPv4, IGMP, ICMP, ARP, TCP, UDP, DHCP, PPPoE, RTP, RTSP, DNS, DDNS, NTP, FTP, UPnP, HTTP, SNMP, SIP
General Function	Password protection, heartbeat, multi-user access control
<b>Interface</b>	
Audio Port	1 Input, 1 Output
Ethernet Port	1 RJ45 10m/100m self-adaptive Ethernet port
Alarm Port	1 Alarm input, 1 Alarm output
Access Protocol	ONVIF
USB Interface	1 USB interface
RS232 Interface	1 RS232 interface
<b>General Specification</b>	
Infrared Distance	200m
Storage Function	Support for MicroSD storage 128G (class10 is recommended)
Rotation Angel	Horizontal: 0°-360° Vertical: -90°-+90°
Temperature Range	-40°C ~ 60°C
Relative Humidity	0 -- 95%
Product Material	316L or 304 Stainless steel
Power Supply	AC 85V ~ 260V or DC24V 3A
Dimensions	449*303*445mm (length * width * height)
Inlet Hole Specification	1 Entry hole G3/4"
Installation Method	Wall or column platform installation
Weight	≤ 26Kg
<b>Product Certifications and Approval</b>	
Product Certifications	CE, FCC, IECEX, CCOE

## Dimensions

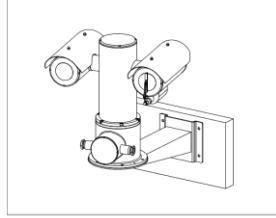
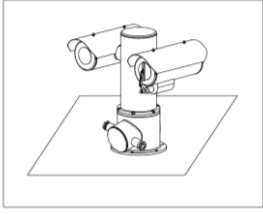


Unit: mm

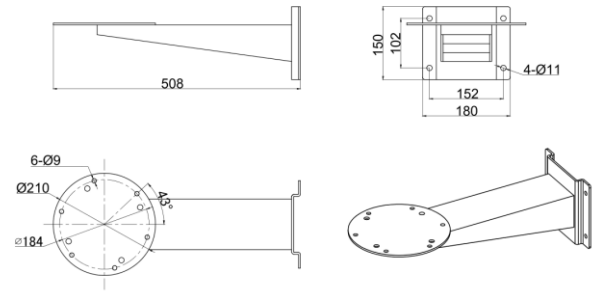
## Ordering Information

VP160-A244-M2	Explosion-proof IR PTZ Camera, 2.0MP, 44X optical zoom, 1/2.8" CMOS sensor, H.265/H.264/MJPEG, DC24V, Junction box with optional fiber output, 316L stainless steel
VP160-A244-M8	Explosion-proof IR PTZ Camera, 2.0MP, 44X optical zoom, 1/2.8" CMOS sensor, H.265/H.264/MJPEG, AC85V-260V, junction box with optional fiber output, 316L stainless steel
VP160-A244-MA	Explosion-proof IR PTZ Camera, 2.0MP, 44X optical zoom, 1/2.8" CMOS sensor, H.265/H.264/MJPEG, DC24V, 316L stainless steel
VP160-A244-MB	Explosion-proof IR PTZ Camera, 2.0MP, 44X optical zoom, 1/2.8" CMOS sensor, H.265/H.264/MJPEG, AC85V-260V, 316L stainless steel
VP160-A244-ME	Explosion-proof IR PTZ Camera, 2.0MP, 44X optical zoom, 1/2.8" CMOS sensor, H.265/H.264/MJPEG, DC24V, Junction box with optional fiber output, 304 stainless steel
VP160-A244-MF	Explosion-proof IR PTZ Camera, 2.0MP, 44X optical zoom, 1/2.8" CMOS sensor, H.265/H.264/MJPEG, AC85V-260V, Junction box with optional fiber output, 304 stainless steel
VP160-A244-MJ	Explosion-proof IR PTZ Camera, 2.0MP, 44X optical zoom, 1/2.8" CMOS sensor, H.265/H.264/MJPEG, DC24V, 304 stainless steel
VP160-A244-MK	Explosion-proof IR PTZ Camera, 2.0MP, 44X optical zoom, 1/2.8" CMOS sensor, H.265/H.264/MJPEG, AC85V-260V, 304 stainless steel
<b>Recommended Mounts:</b>	
V1571-20-W	304 stainless steel, Wall mount, weight 5Kg
V1571-20L-W	316L stainless steel, Wall mount, weight 5Kg

## Mounting



## Mounts Dimensions



Unit: mm